



Building with conscience.

StoPowerwall®

Stucco systems

Facades



StoPowerwall® Stucco systems offer fully engineered systems incorporating Sto's wide range of aesthetic options. These high performance systems include crack prevention, increased drainage and continuous insulation options and meet all US energy and building codes.





StoPowerwall Systems

StoPowerwall systems combine Portland cement stucco with a fluid-applied air and water-resistive barrier system, advanced cavity wall design, continuous insulation (where specified), and Sto high-performance aesthetics.

Stucco has been used and trusted for centuries since ancient Greeks used it in temple walls in 1400 BCE. Today, stucco is an advanced system with a proven record of durability and performance. With StoPowerwall systems, Sto has applied the latest building science to improve moisture resistance, drainage capabilities, continuous insulation, cracking mitigation and aesthetic choices.

Sto offers a variety of stucco systems to meet various energy and building codes, including Hurricane systems, that comply with Miami Dade requirements. When paired with other building-code-compliant materials—metal lath, building paper, sheathing over wood framing, metal framing, or CMU back-up wall construction—and properly integrated into wall construction, StoPowerwall systems provide lasting beauty and protection.



Style number G1.VT242021

Creating lasting impression

Stucco has evolved in every way, including its appearance. With StoPowerwall, you have nearly unlimited creative possibilities. Custom finish options, coatings, colors, and textures are all at your fingertips.

If you want a non-traditional stucco look, you can use StoSignature® or StoCast. StoSignature provides a virtually endless blend of color, texture, profiles, and effects utilizing Sto products to achieve the look of limestone, concrete and more. StoCast uses lightweight, flexible, resin-cast planks to authentically mimic the look and feel of natural wood or brick.

The StoCreativ® finishes offer the look of granite or natural stone at a fraction of a cost of the original material.



Deflect it to protect it

Three elements of moisture management:

Controlling moisture is the key to minimizing maintenance and preserving the curb appeal of exterior stucco walls. StoPowerwall® Systems are engineered for superior moisture management by implementing three design principles for any exterior cladding: Deflection, Drainage, and Drying. When correctly installed and maintained, these components work together to keep the wall system dry and free from water-related issues.

Deflect

Sto high-performance coatings and finishes along with Sto Crack Defense provide a strong, flexible outer layer that protects stucco buildings from moisture by deflecting water off the face of the cladding, which:

- Creates a more durable, easier-to-maintain surface with excellent weatherability
- Stands up to wind-driven rain and UV light degradation
- Resists algae, mildew, and mold growth

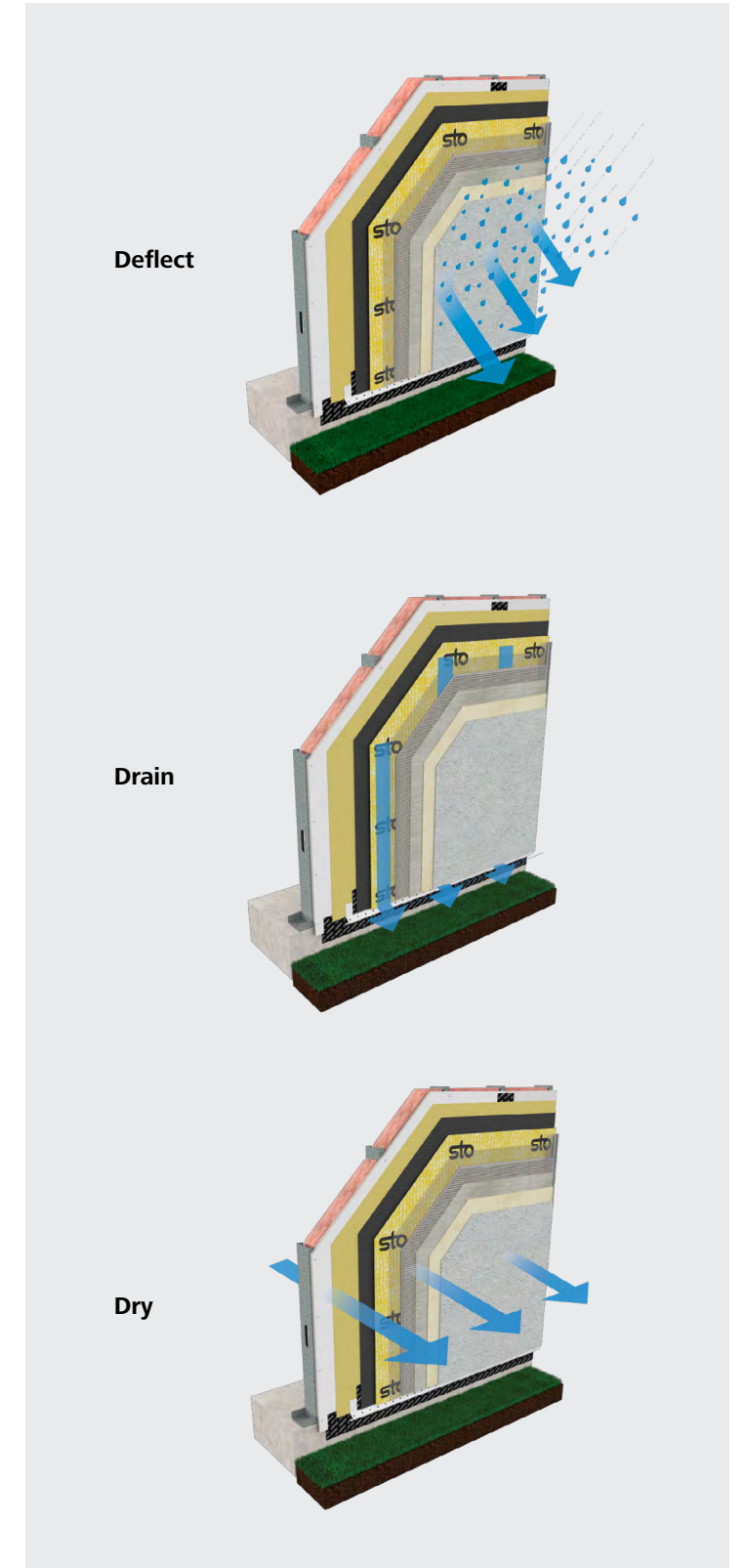
For example, Stolit® Lotusan® offers a super-hydrophobic, high-performance finish that delivers unprecedented water repellence and boasts self-cleaning properties. For a durable wood look with extended UV performance, simply use StoColor Wood Stain—a stain and sealer in one over StoCast Wood.

Drain

The Sto DrainScreen® drainage mat is an essential component of Sto's fully engineered stucco system. It facilitates continuous ventilation and drainage, effectively removing incidental moisture and helping to preserve the integrity of the wall assembly. When combined with the StoGuard® air and water-resistive barrier, Sto DrainScreen® offers optimal protection against moisture intrusion.

Dry

StoPowerwall systems let water vapor escape from the wall assembly, allowing it to breathe. This helps prevent moisture buildup inside the walls, which can lead to mold, mildew, and structural damage.





Building code-compliant wall assemblies

StoPowerwall Systems incorporate stucco products produced by Sto or its manufacturing partners that comply with ICC Acceptance Criteria for Cementitious Exterior Wall Coverings (AC 11) and ASTM C 926.

Energy efficiency

To meet energy codes, StoPowerwall ci systems can incorporate up to 3" thick Sto GPS rigid foam insulation, providing an R-value of up to 15. StoPowerwall ci complies with regulatory requirements for continuous insulation over steel and wood framing, including ASHRAE Standard 90.1-2022, the new IGCC/IECC energy code requirements for continuous insulation, and the Title 24 requirements for energy efficiency.

Water management

For water management, the StoPowerwall ci and StoPowerwall ci DrainScreen Systems incorporate advanced cavity wall design with Sto DrainScreen and a continuous fluid-applied, vapor-permeable air and water-resistive barrier, Sto Gold Coat®. Both are listed components in ICC-ESR 1233 and meet ASTM E2357 standards for air leakage resistance in air and water-resistive barrier assemblies.

Fire testing compliance

For fire safety, StoPowerwall ci and StoPowerwall DrainScreen systems have been tested in accordance with NFPA 285 and ASTM E119, meeting the acceptance criteria for use in noncombustible construction (Types I-IV) and combustible construction (Type V), as outlined in ICC-ESR 1233. StoPowerwall ci is also available with Sto Fireblocking, which complies with the 2022 NYC Building Code.



System	StoPowerwall ci	StoPowerwall DrainScreen	StoPowerwall DrainScreen MVES
Air and water-resistive barrier	✓	✓	✓
Enhanced drainage plane	✓	✓	✓
Continuous insulation	GPS		
R-value	4.7 / inch		
Insulation thickness	1,2, and 3 inches		
Weight (not including sheathing and frame)	~13 lbs psf	~12 lbs psf	~12 - 27 lbs psf
Wind Load Resistance	Tested up to +65, -48 lbs/ft²	Tested up to +65, -48 lbs/ft²	Tested up to +65, -48 lbs/ft²
Dark Color Aesthetic Surfaces (LRV < 20)	✓	✓	✓
Masonry Veneer Surfaces			✓
Miami Dade County, Florida NOA Compliance	Noncombustible: use on all types of construction		
Fire Resistance	NFPA 285 tested for Types I - IV Construction	Types I - IV Construction	Types I - IV Construction
System Warranty	15 years	10 years	12 years



All StoPowerwall ci Systems feature:

- A fully integrated and seamless air and moisture barrier to promote compatibility and continuity of the air/water/vapor control layer
- A wide range of aesthetic surfaces selection to ensure design freedom
- Sto Crack Defense option to prevent hair line cracking
- Cement based systems mean ultra impact and puncture resistance facades (birds, termites, pests), easy to maintain and with low maintenance costs
- Code compliant and fire resistant as all our system comply with NFPA 285, NFPA 268 and ASTM E84 and can be used in type I-IV construction

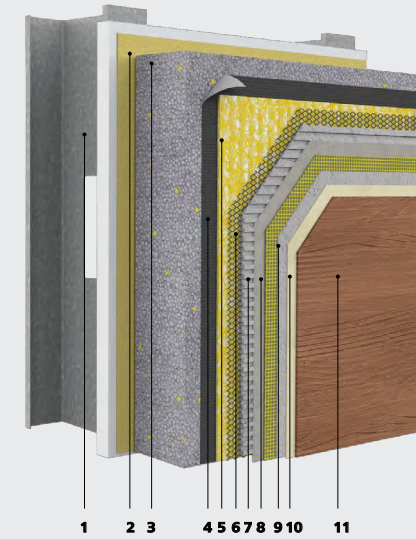


StoPowerwall ExtraSeal	StoPowerwall ExtraSeal MVES	StoPowerwall GMG	StoPowerwall GMG Structa Wire	StoPowerwall GMG DrainScreen
✓	✓	✓	✓	✓
				✓
~7 lbs psf	~7 - 19 lbs psf	~12 lbs psf	~12 lbs psf	~12 lbs psf
Equivalent to CMU wall construction	Equivalent to CMU wall construction	Tested up to +100, -100 lbs/ft²	Tested up to +100, -100 lbs/ft²	Tested up to +100, -100 lbs/ft²
✓	✓	✓	✓	✓
	✓			
		✓	✓	✓
Types I - IV Construction	Types I - IV Construction	Types I - IV Construction	Types I - IV Construction	Types I - IV Construction
10 years	10 years	10 years	10 years	10 years



StoPowerwall® ci

with Sto Fireblocking and Sto Crack Defense option

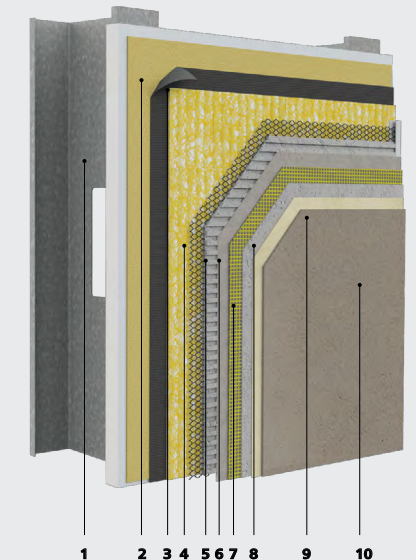


1. Structural Wall Assembly
2. StoGuard air and water-resistant barrier
3. Sto GPS Board
4. Code Compliant WRB paper or Felt
5. Sto DrainScreen
6. Metal Lath
7. Sto Stucco Scratch Coat
8. Sto Stucco Brown Coat
9. Sto Crack Defense (optional): Sto Mesh with Sto Basecoat
10. Sto Primer (optional)
11. Sto Architectural Surface

Features	Benefits
Compatible with Sto Fireblocking option	Engineered and patent pending solution to offer compliance with New York City 2022 Building Code, section 718.2.6. of 2000° F
Continuous Sto GPS insulation	High thermal efficiency with an R-value of up to 15 (3 inch)
Sto DrainScreen	Promotes drainage and drying; complies with codes that require a drainage cavity beneath stucco

StoPowerwall® DrainScreen

With Sto Crack Defense option

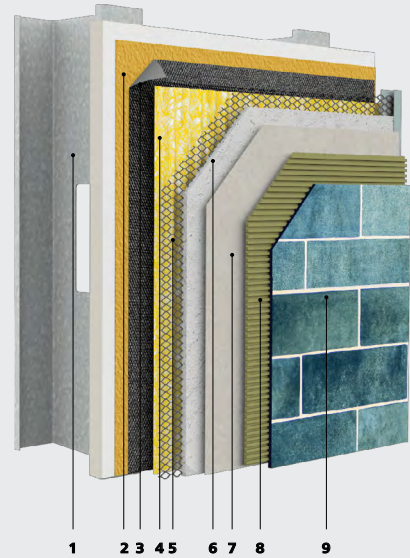


1. Structured Wall Assembly
2. StoGuard air and water-resistant barrier
3. Code compliant WRB paper or Felt
4. Sto DrainScreen
5. Metal Lath
6. Sto Stucco Scratch Coat
7. Sto Stucco Brown Coat
8. Sto Crack Defense (optional): Sto Mesh with Sto Basecoat
9. Sto Primer (optional)
10. Sto Architectural Surface

Features	Benefits
Sto DrainScreen advanced	Promotes drainage and drying; complies with codes that require a drainage cavity beneath stucco



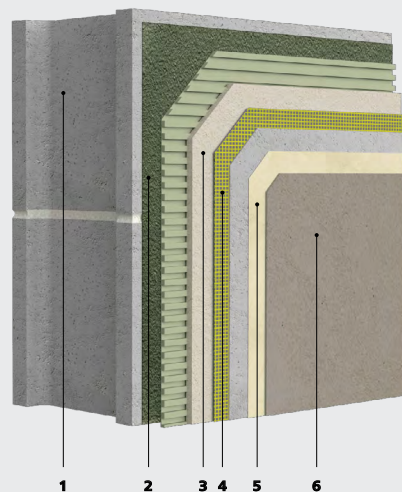
StoPowerwall® DrainScreen MVES



1. Structural Wall Assembly
2. StoGuard air and water-resistant barrier
3. Code Compliant WRB paper or Felt
4. Sto DrainScreen
5. Metal Lath
6. Sto Stucco Scratch Coat
7. Sto Stucco Brown Coat
8. Sto Masonry Veneer Adhesive
9. Masonry Veneer Grout
10. Aesthetic Surface Option: featured here with tile

Features	Benefits
Sto DrainScreen	Promotes drainage and drying: complies with codes that require drainage cavity beneath stucco
Fire Resistant Wall Design	Occupant safety
Variety of masonry veneers – brick, stone, tile – that integrate seamlessly with Sto Architectural surfaces	Design versatility on a single compatible substrate

StoPowerwall® ExtraSeal® With Sto Crack Defense option

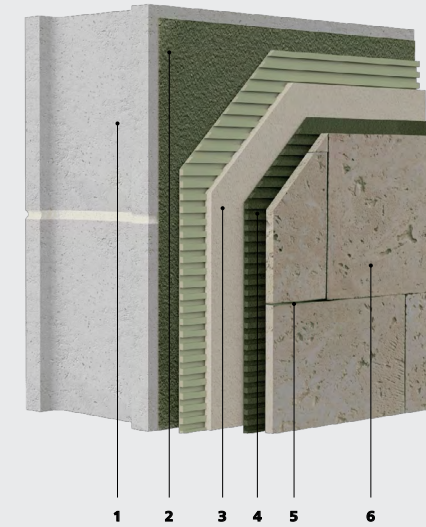


1. Structural Wall Assembly
2. Sto ExtraSeal
3. Sto Stucco Brown Coat
4. Sto Crack Defense (optional): Sto Mesh with Sto Basecoat
5. Sto Primer (optional)
6. Sto Architectural Surface

Features	Benefits
Facilitates prescriptive compliance with IECC air barrier requirements	Promotes drainage and drying: complies with codes that require drainage cavity beneath stucco
Maintains 5/8" stucco thickness per ASTM C926	Occupant safety
Resists wind-driven rain	Design versatility on a single compatible substrate



StoPowerwall ExtraSeal MVES



1. Structural Wall Assembly
2. Sto ExtraSeal
3. Sto Stucco Brown Coat
4. Sto Masonry Veneer Adhesive
5. Masonry Veneer Grout
6. Aesthetic Surface Option: featured here with stone veneer

Features	Benefits
Facilitates prescriptive compliance with IECC air barrier requirements	Speed of installation, waterproofing basecoat that also functions as a stucco scratch coat.
Maintains 5/8" stucco thickness per ASTM C926	Minimizes occurrence of cracking
Resists wind-driven rain	Lower cost and faster installation: no lath, no mechanical fasteners
Variety of masonry veneers – brick, stone, tile – that integrate seamlessly with Sto Architectural surfaces	Design versatility on a single compatible substrate

StoPowerwall GMG

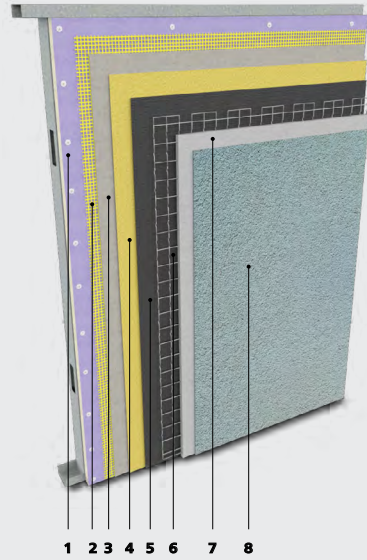


1. Glass mat gypsum sheathing
2. Sto Mesh
3. Sto Basecoat
4. StoGuard air and water-resistant barrier
5. Building paper
6. Metal Lath
7. Sto Powerwall® Stucco Scratch & Brown
8. Sto Architectural Surfaces

Features	Benefits
Large and small missile impact wall assembly	Meets Miami-Dade County, Florida NOA criteria for impact resistance, air and water infiltration, and wind load resistance



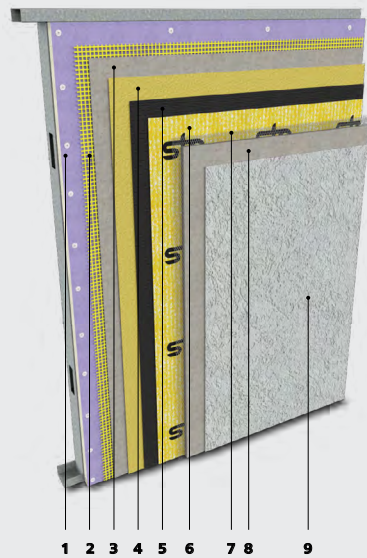
**StoPowerwall GMG
with Structa Wire**



1. Glass mat gypsum sheathing
2. Sto Mesh
3. Sto Basecoat
4. StoGuard air and water-resistant barrier
5. Building paper
6. Structa Wire Lath
7. Sto Stucco
8. Sto Architectural Surfaces

Features	Benefits
Large and small missile impact wall assembly	Meets Miami-Dade County, Florida NOA criteria for impact resistance, air and water infiltration, and wind load resistance
Structa Wire Lath	Ensured proper thickness of stucco

**StoPowerwall GMG
with Sto DrainScreen**



1. Glass mat gypsum sheathing
2. Sto Mesh
3. Sto Basecoat
4. StoGuard air and water-resistant barrier
5. Building paper
6. Sto Drainscreen
7. Metal Lath
8. Sto Stucco
9. Sto Architectural Surfaces

Features	Benefits
Large and small missile impact wall assembly	Meets Miami-Dade County, Florida NOA criteria for impact resistance, air and water infiltration, and wind load resistance
Sto DrainScreen	Optimal water drainage performance



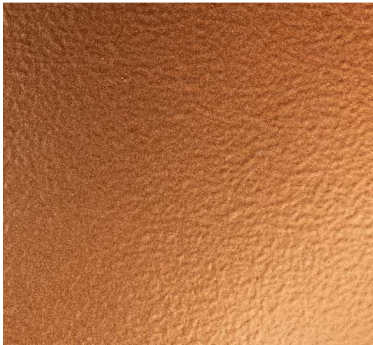
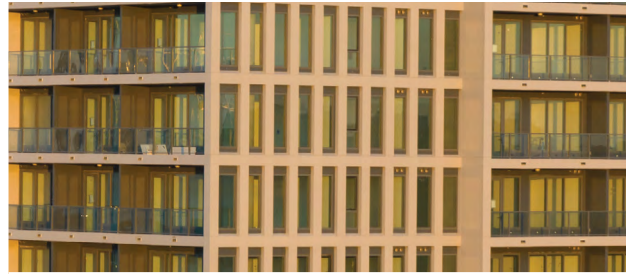


The foundation for creativity.

Inspiration favors the open mind. With Sto, your creative exploration can take you anywhere. Our proven products give you unmatched freedom and the ability to achieve your vision in any color, any form, any texture, any material.

Leveraging the very latest in building science, StoPowerwall Stucco Systems deliver unprecedented design—functional and aesthetic—freedom. If you can imagine it, you can do it. StoPowerwall Stucco Systems improve moisture resistance, drainage capabilities, continuous insulation, cracking mitigation and aesthetic choices. Additionally, with Sto, you have a company that stands behind its products and will stand with you and your team through project completion.

Creativity Begins. **Sto Finishes.**®



Sto Americas

Sto Corp.
3800 Camp Creek Pkwy
Building 1400, Suite 120
Atlanta, GA 30331
USA

Phone 1-800-221-2397
www.stocorp.com

ATTENTION

Sto products are intended for use by qualified professional contractors, not consumers, as a component of a larger construction assembly as specified by a qualified design professional, general contractor or builder. They should be installed in accordance with those specifications and Sto's instructions. Sto Corp. disclaims all, and assumes no, liability for on-site inspections, for its products applied improperly, or by unqualified persons or entities, or as part of an improperly designed or constructed building, for the nonperformance of adjacent building components or assemblies, or for other construction activities beyond Sto's control. Improper use of Sto products or use as part of an improperly designed or constructed larger assembly or building may result in serious damage to this product, and to the structure of the building or its components. **STO CORP. DISCLAIMS ALL WARRANTIES EXPRESSED OR IMPLIED EXCEPT FOR EXPLICIT LIMITED WRITTEN WARRANTIES ISSUED TO AND ACCEPTED BY BUILDING OWNERS IN ACCORDANCE WITH STO'S WARRANTY PROGRAMS WHICH ARE SUBJECT TO CHANGE FROM TIME TO TIME.** For the fullest, most current information on proper application, clean-up, mixing and other specifications and warranties, cautions and disclaimers, please refer to the Sto Corp. website, www.stocorp.com.